

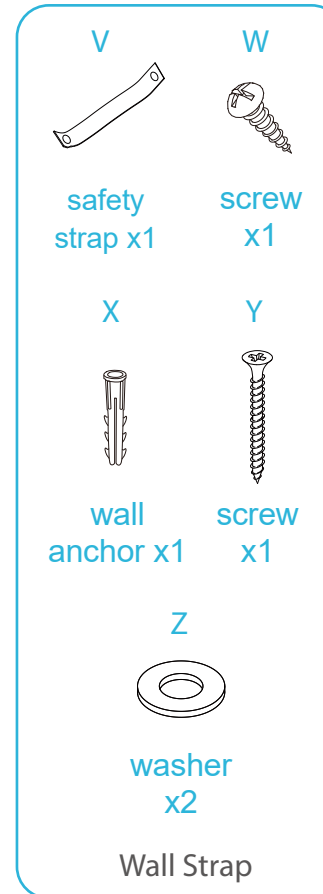
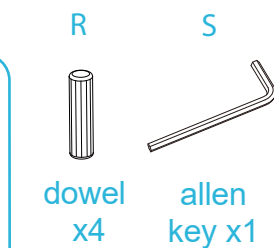
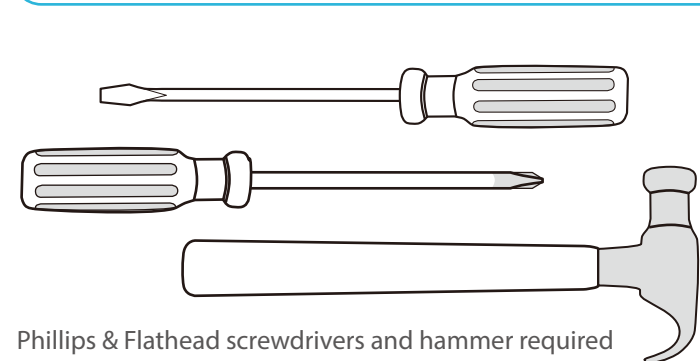
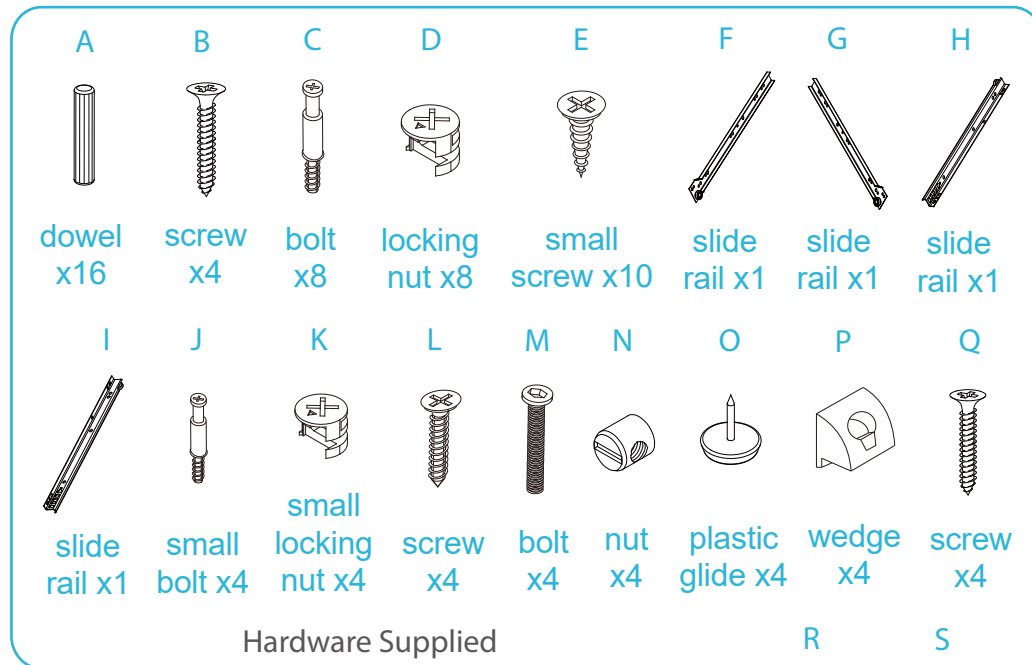
# Chelsea Bedside Table

## Assembly Instructions

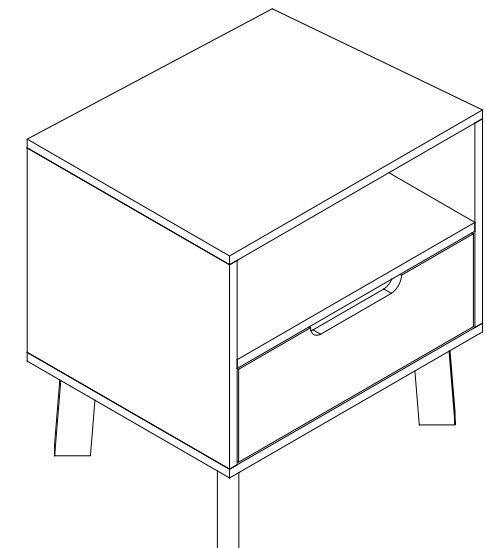
Thank you for your purchase.

Please follow the instructions below for correct assembly.

# mocka



**WARNING:** Any furniture that is not anchored to a wall has the potential to tip over in certain circumstances, i.e. if a child attempts to climb up on the furniture or in the event of an earthquake. Accordingly, we recommend that all furniture is anchored to a wall. We supply a free safety wall anchor with all furniture sold and we recommend these are used to prevent your product tipping. The fixing device provided should fit most wall types, but please note that different wall materials may require different fixing devices from those supplied.



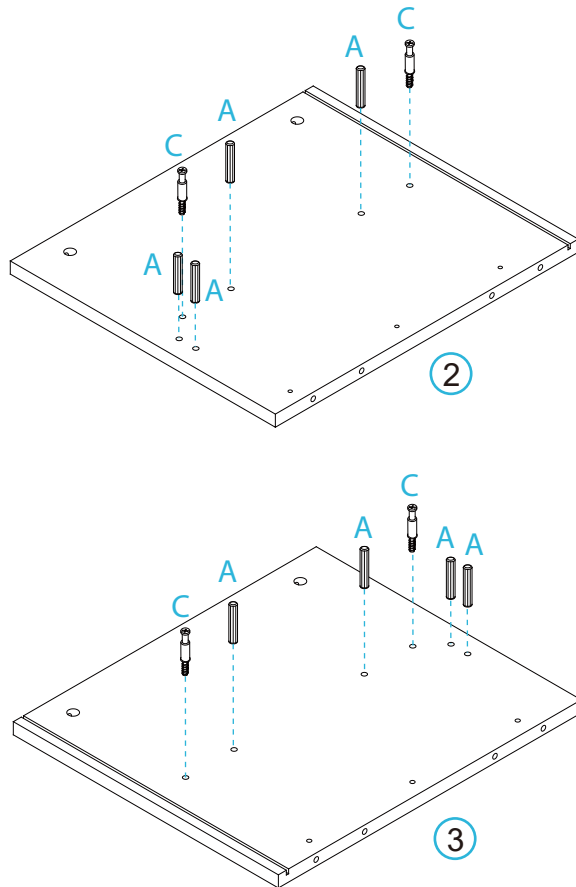
\*We recommend using a Flathead screwdriver to tighten all locking nuts 100% before first use.  
Please clear any loose wood from the locking nut holes before inserting the nut to ensure it locks 100%.

# Chelsea Bedside Table

## Assembly Instructions

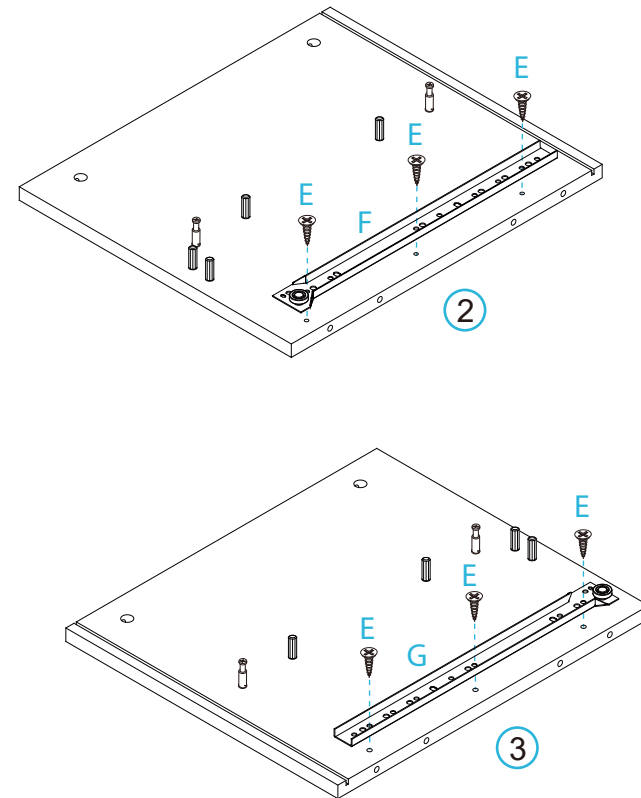
mocka

1



Insert 4x dowels (A) and 2x bolts (C) into panel [2]. Insert 4x dowels (A) 2x dowels (C) into panel [3].

2



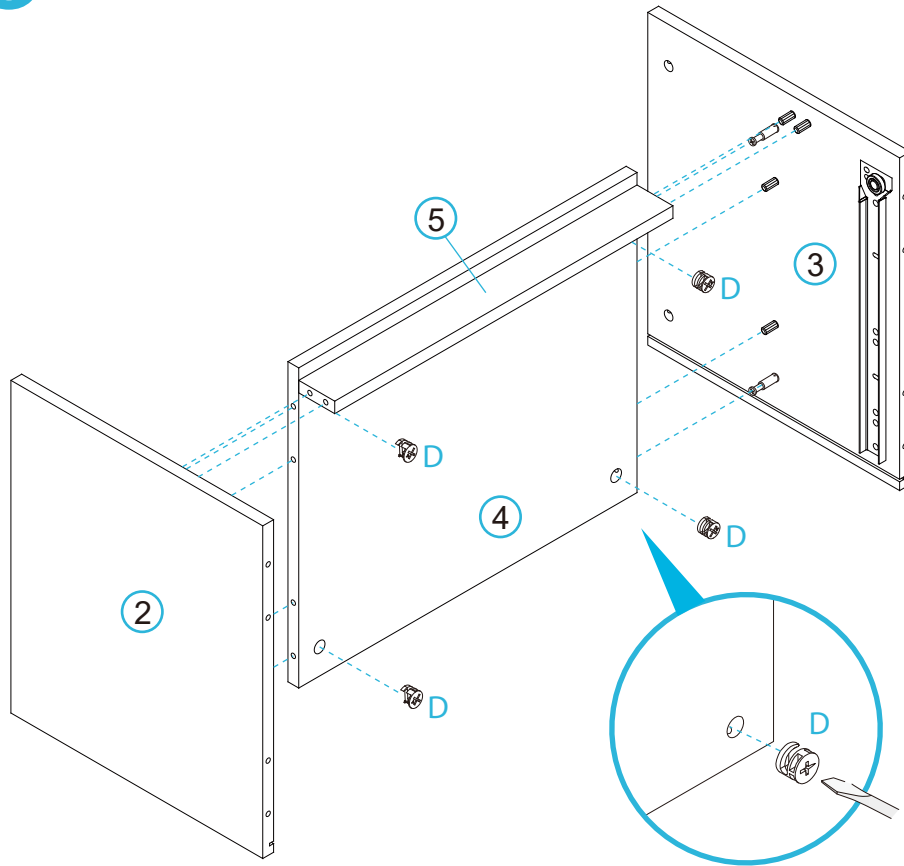
Attach 1x slide rail (F) to panel [2] and secure with 3x small screws (E). Attach 1x slide rail (G) to panel [3] and secure with 3x small screws (E). Tighten all with a screwdriver.

# Chelsea Bedside Table

## Assembly Instructions

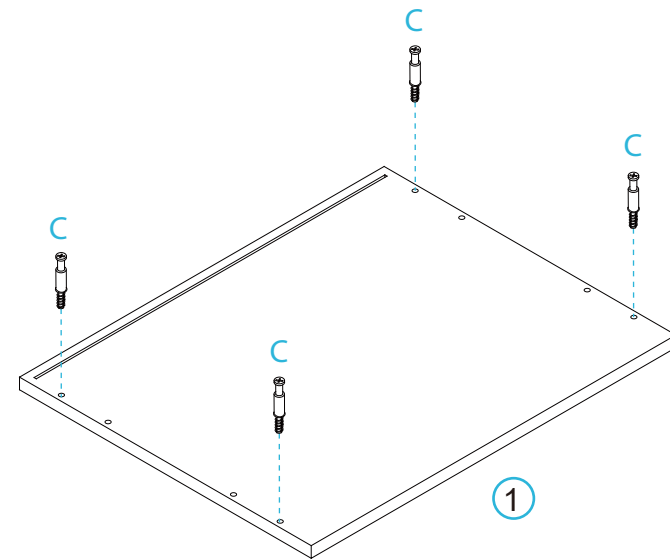
mocka

3



Attach panels [4] and [5] to the dowels on panels [2] and [3], securing with 4x locking nuts (D). Tighten with a screwdriver.

4



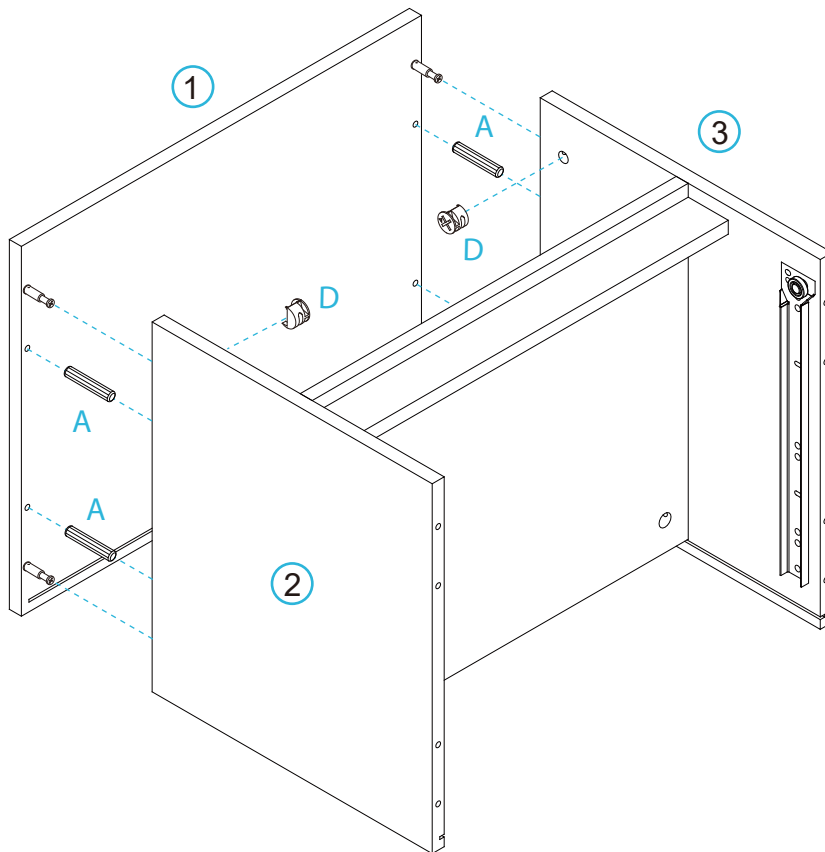
Insert 4x bolts (C) into panel [1].

# Chelsea Bedside Table

## Assembly Instructions

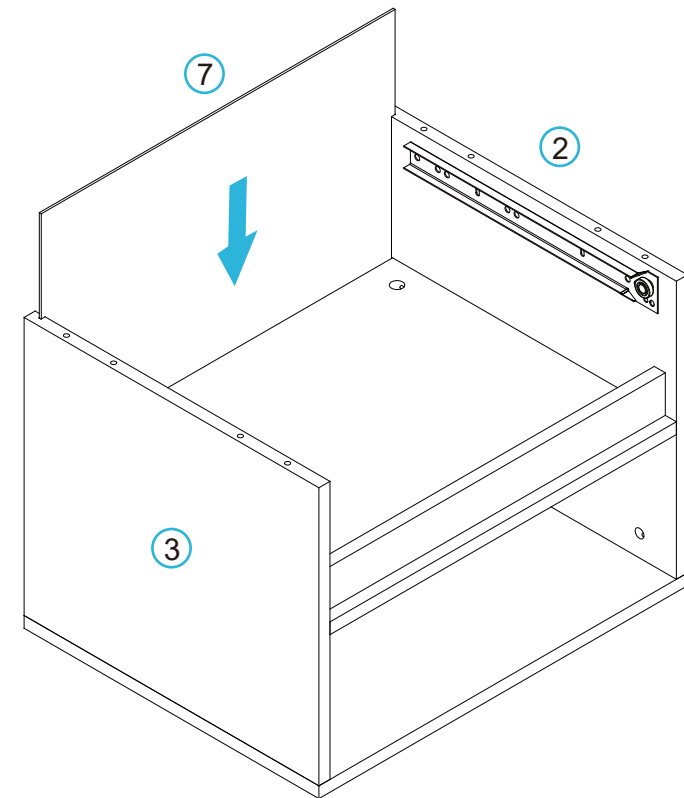
mocka

5



Attach panel [1] to panels [2] and [3] using 4x dowels (A) and secure with 4x locking nuts (D). Tighten with a screwdriver.

6



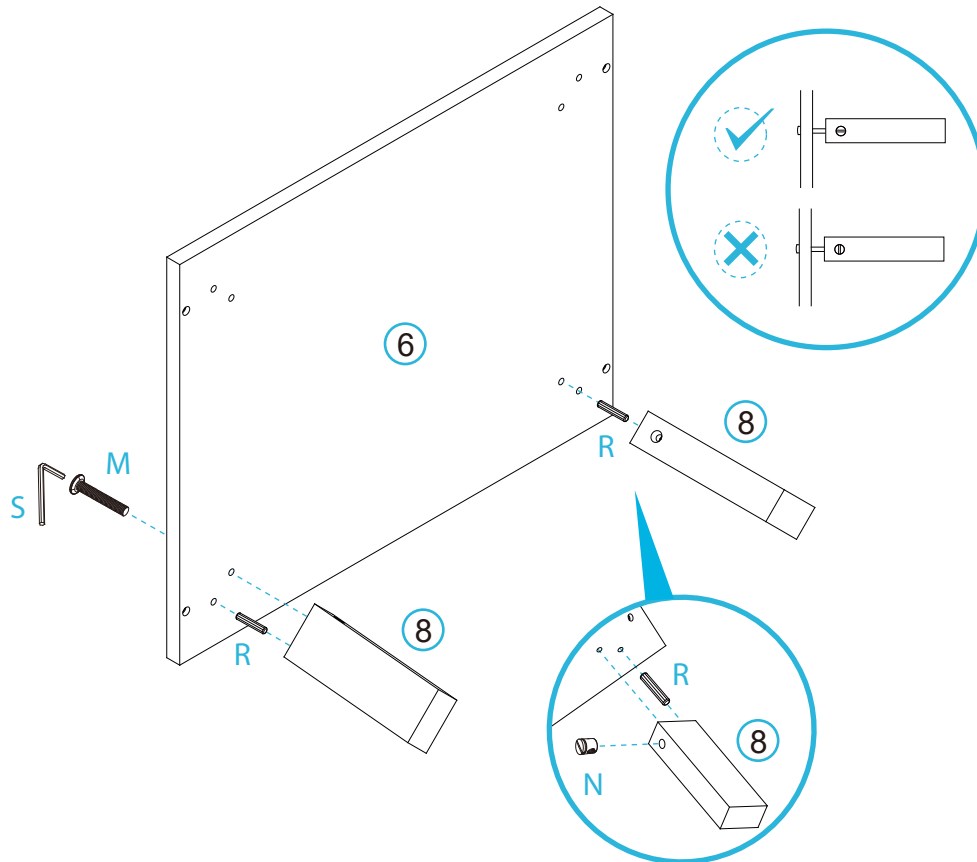
Slide panel [7] down along the grooves between side panels [2] and [3] to form the back of the unit.

# Chelsea Bedside Table

## Assembly Instructions

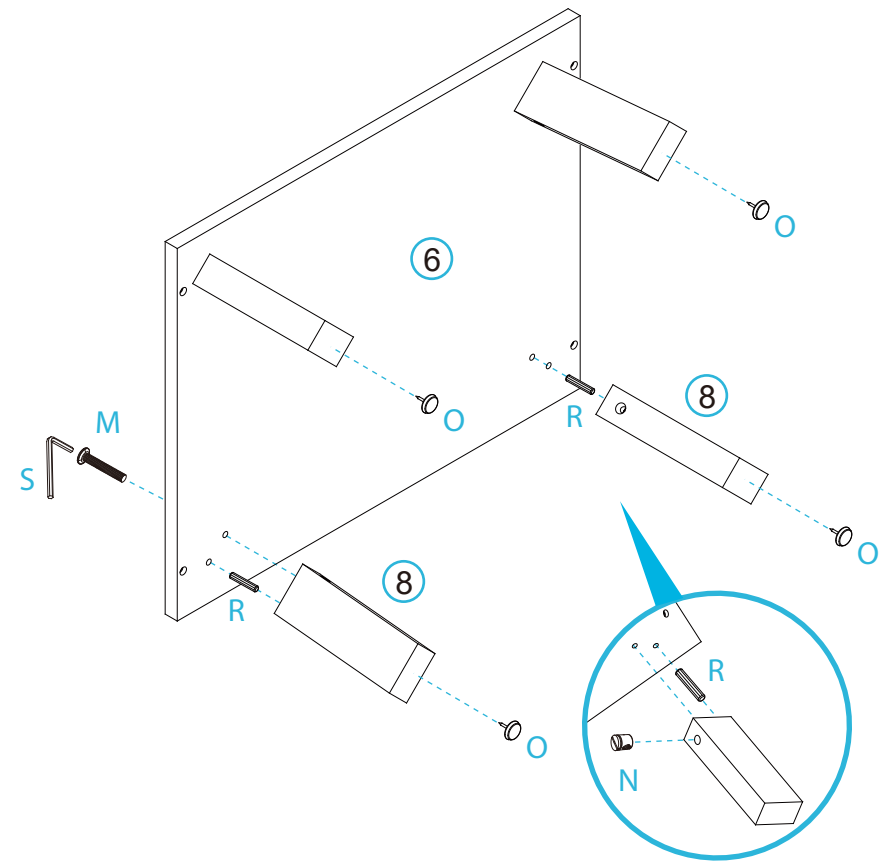
mocka

7



Attach 2x legs [8] to panel [6] with 2x dowels (R) and 2x bolts (M) as shown. Tighten bolts with the allen key (S) and secure with 2x nuts (N). Tighten the nuts with a flathead screwdriver.

8



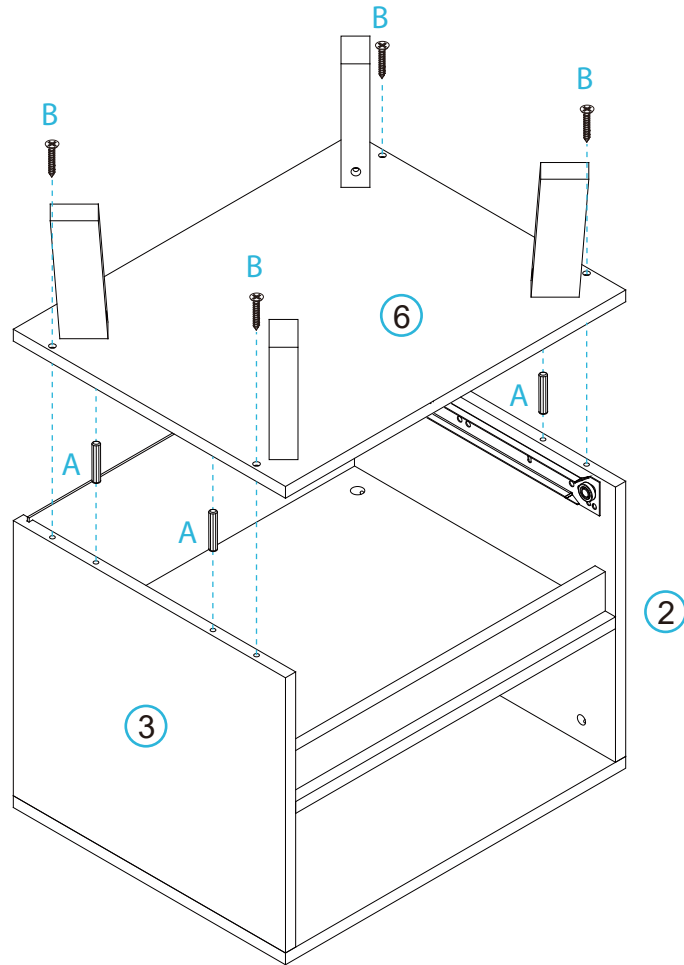
Attach the remaining 2x legs [8] to panel [6] with 2x dowels (R) and 2x bolts (M) as shown and secure with 2x nuts (N). Tighten the bolts with the allen key (S) and the nuts with a flathead screwdriver. Hammer in 4x plastic glides (O) to the end of each leg as shown.

# Chelsea Bedside Table

## Assembly Instructions

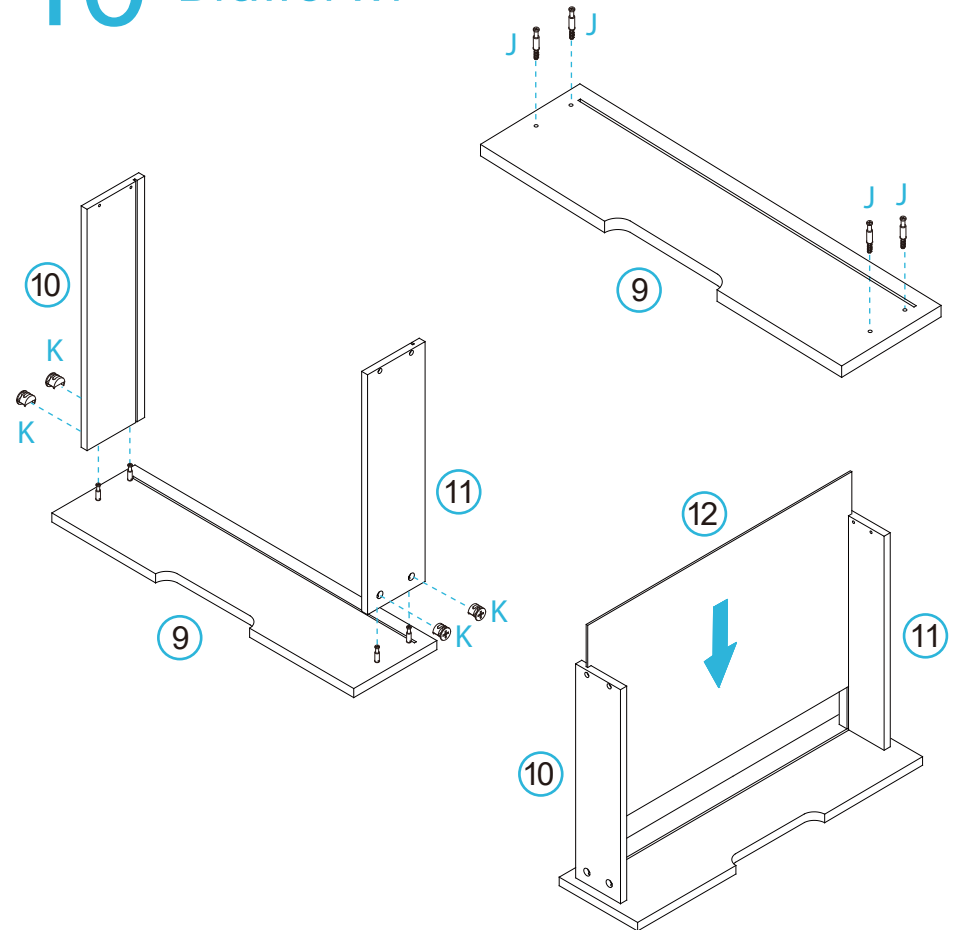
mocka

9



Attach panel [6] to the rest of the unit using 4x dowels (A) and secure with 4x screws (B). Tighten with a screwdriver.

10 Drawer x1



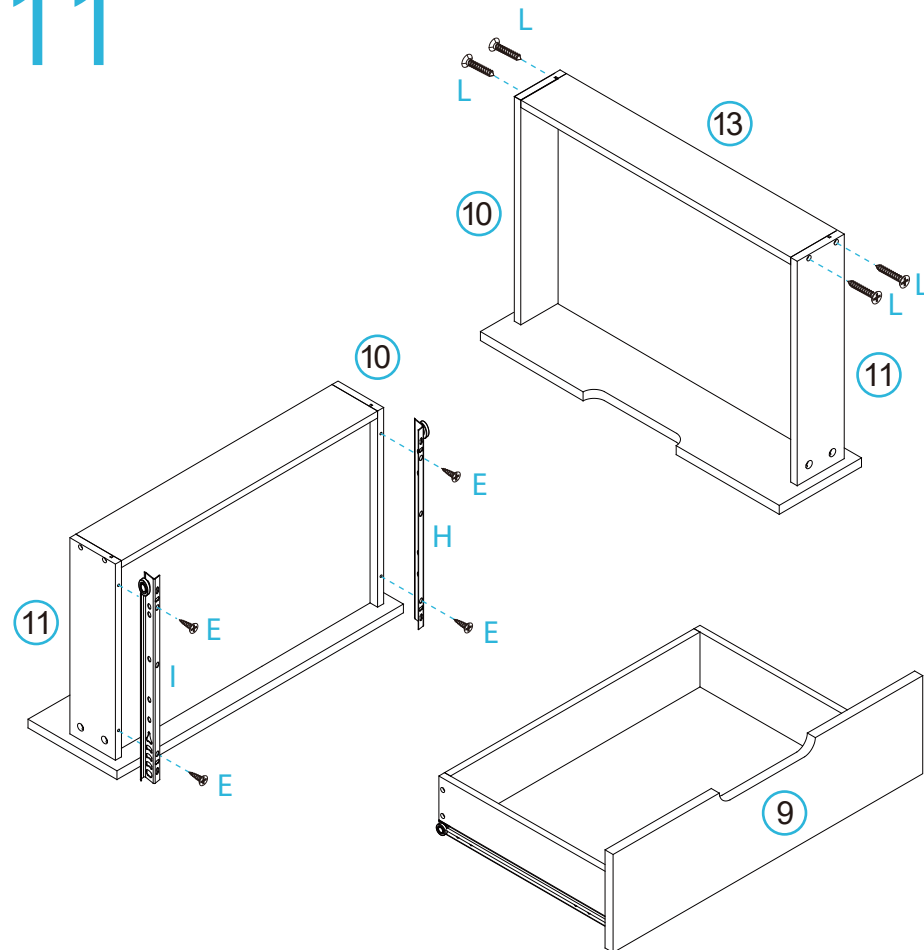
Insert 4x small bolts (J) into panel [9]. Secure panels [10] and [11] to panel [9] with 4x small locking nuts (K). Tighten with a screwdriver. Slide panel [12] down along the grooves between panels [10] and [11] to form the base of the drawer.

# Chelsea Bedside Table

## Assembly Instructions

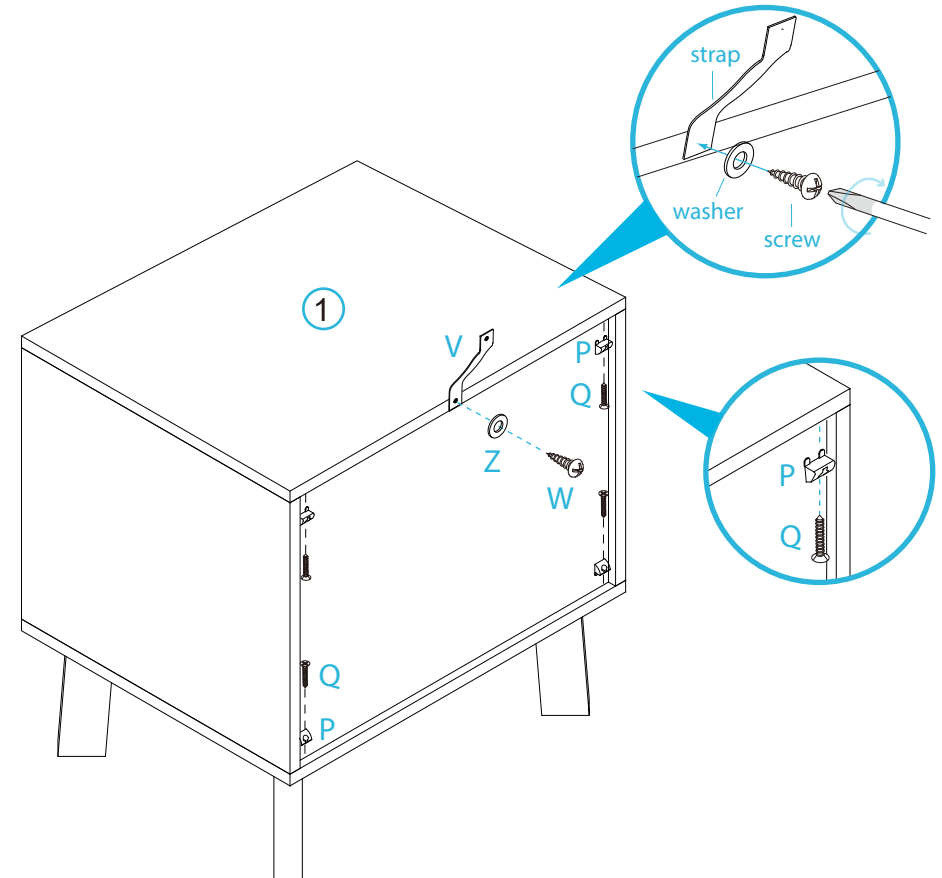
mocka

11



Attach panel [13] to panels [10] and [11] using 4x screws (L). Now attach 1x slide rail (I) to panel [11] and 1x slide rail (H) to panel [10] as shown. Secure with 4x small screws (E) and tighten with a screwdriver. Insert the assembled drawer into the unit ensuring it slides smoothly along the rails.

12 Wall Strap



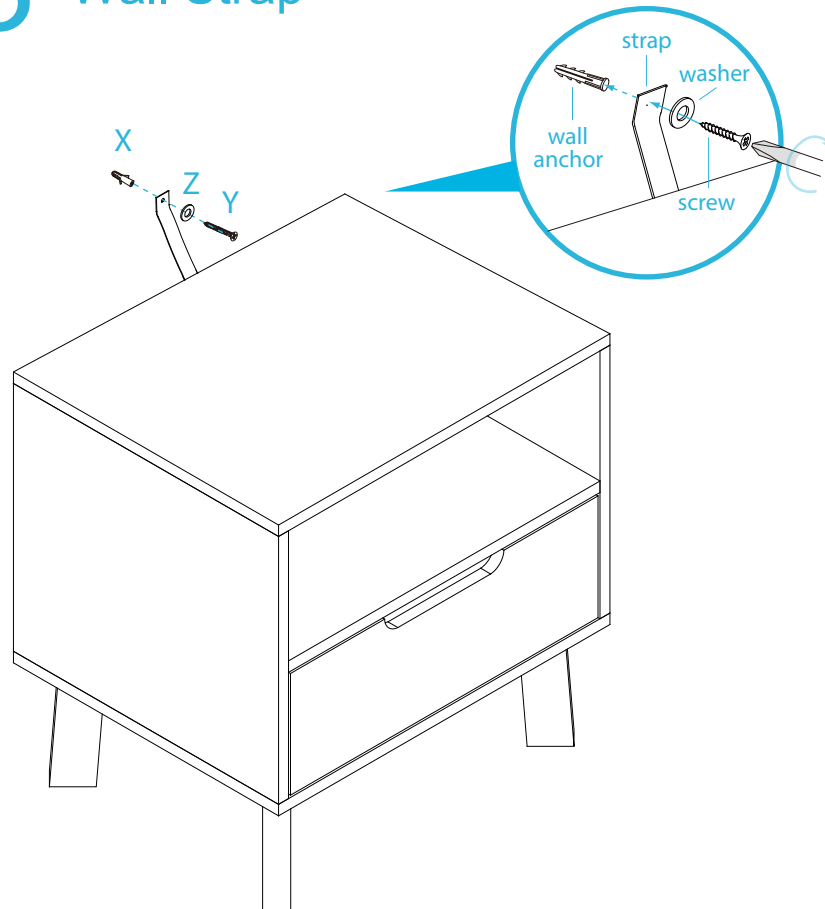
Attach 4x wedges (P) to the corners of the back of the unit and secure with 4x screws (Q). Attach 1x safety strap (V) to the back edge of panel [1] using 1x washer (Z) and 1x screw (W). Tighten with a screwdriver.

# Chelsea Bedside Table

## Assembly Instructions

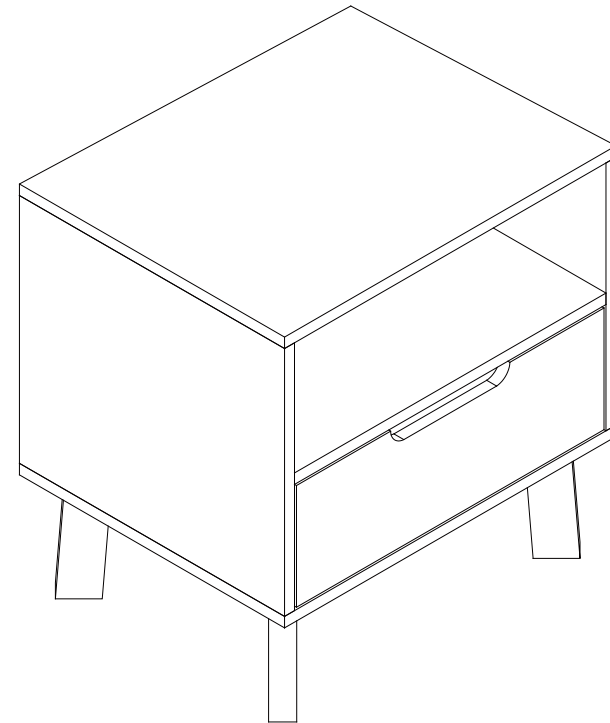
mocka

### 13 Wall Strap



Once assembled lift furniture into place, do not drag. Use a drill to create a small hole lining up with the top of the safety strap (V). Fasten to wall using 1x wall anchor (X), 1x washer (Z) and 1x screw (Y).

### 14



Ensure unit is balanced and steady before use. You're done, enjoy!